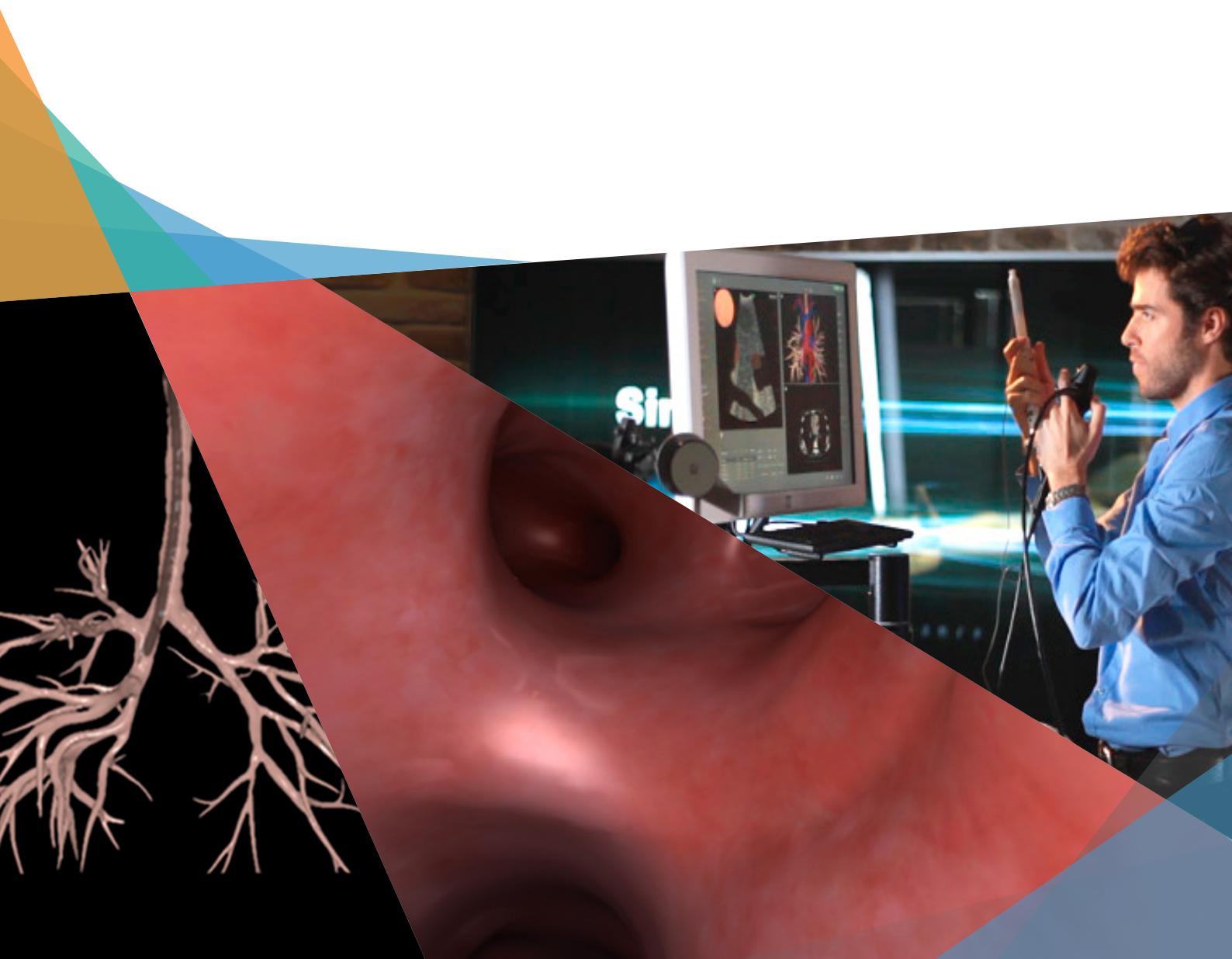


BRONCH Mentor[®]





BRONCH Mentor

A true-to-life training environment using an authentic scope with tactile feedback, and realistic visualization displayed on a 24" touch screen. The flexible system configuration supports either lateral or posterior working positions for team or solo training.

The GI-BRONCH Mentor platform offers the most comprehensive bronchoscopy hands-on training available, as well as optional add-on modules for GI Endoscopy.

BRONCH Express - co-developed with CHEST (ACCP)

This innovative portable simulator provides a meaningful yet affordable hands-on solution to the growing demand for training and qualification for core bronchoscopy skills and procedures.



BRONCH Mentor

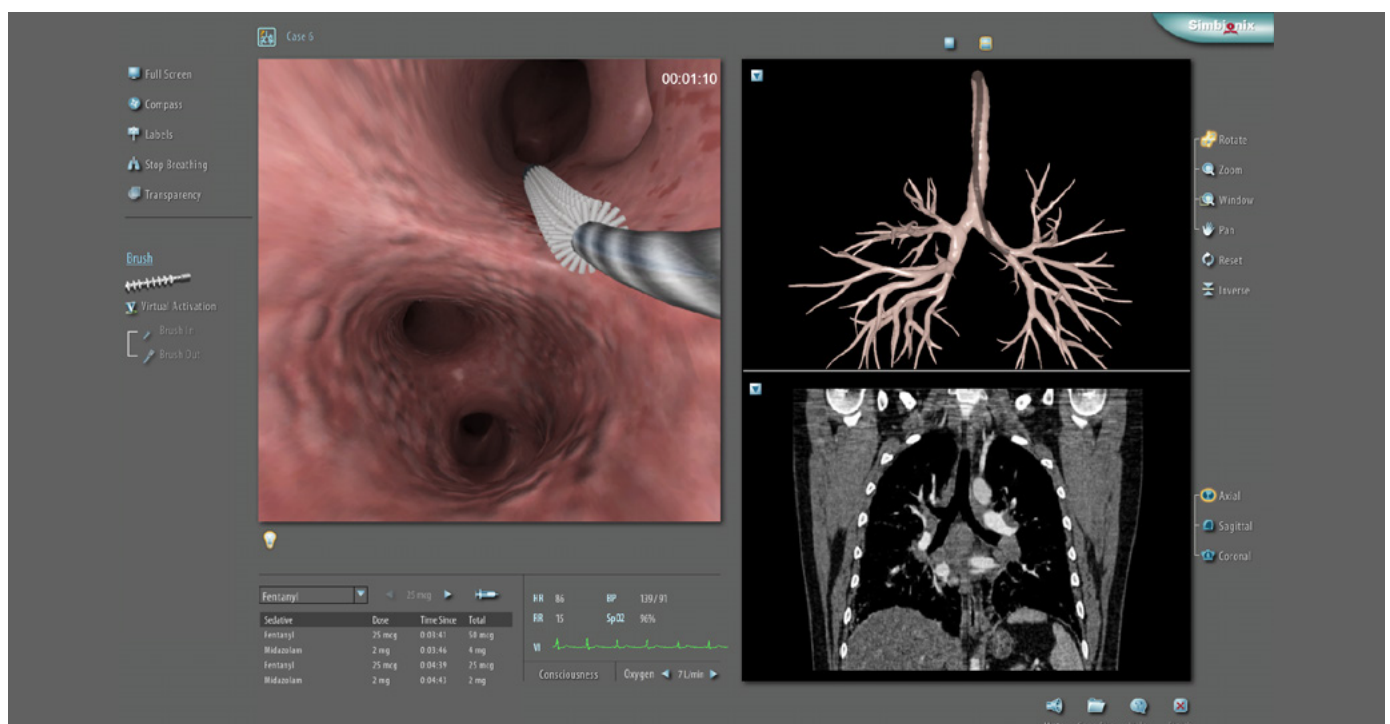


BRONCH Express

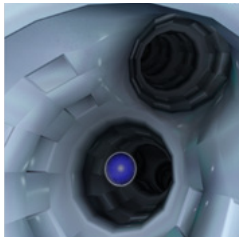
The BRONCH Mentor provides the optimal learning environment for bronchoscopic skills acquisition and clinical procedure practice.

Features and Benefits

- Realistic simulation featuring authentic scope, tactile feedback and a flexible working setup promoting team training.
- True to life virtual patient cases modeled after real patients.
- Comprehensive patient environment includes sedation, topical anesthesia, reactive vital signs, cough and complications.
- Unique educational environment enhances 3D perception, anatomical knowledge, procedural know-how and patient safety.
- Training and assessment are designed to foster safe and efficient performance while considering patient safety, procedural adequacy, clinical discretion, diagnostic yield and equipment safety.
- Meaningful performance metrics for self-assessment and competence demonstration prior to real patient practice.



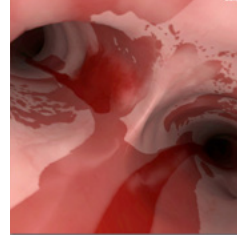
BRONCH Mentor Modules



ESSENTIAL BRONCHOSCOPY

Designated essential skill tasks to optimize novice users learning curve while acquiring and integrating bronchoscopic capabilities.

Developed in conjunction with and endorsed by the American Association for Bronchoscopy and Interventional Pulmonology (AABIP).



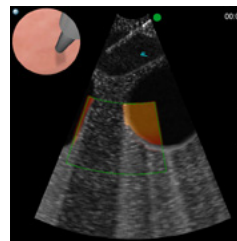
EMERGENCY BRONCHOSCOPY

Emergency and ICU situations that require bronchoscopic intervention such as foreign body aspiration, endobronchial bleeding and secretion filled airways.



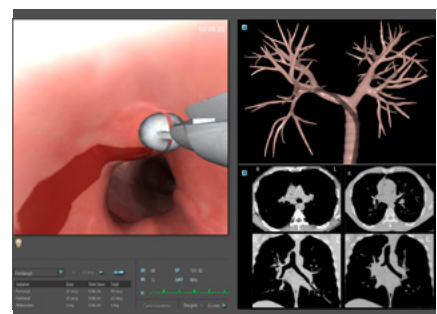
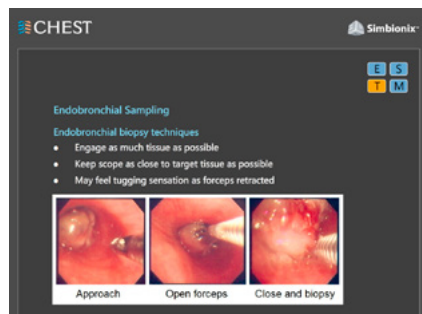
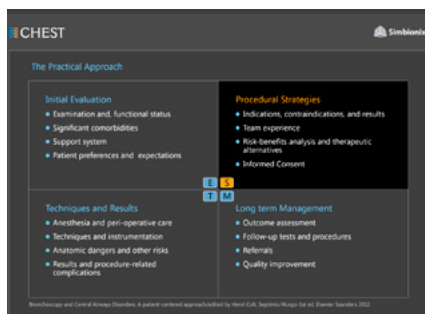
DIAGNOSTIC BRONCHOSCOPY

Virtual patient cases requiring diagnostic bronchoscopies, including airway inspection and various endobronchial transbronchial tissue sampling methods.



ESSENTIAL EBUS

Tasks and complete clinical cases to enhance ultrasound image interpretation, anatomical structures recognition, and procedural performance of the complete EBUS-TBNA workflow.

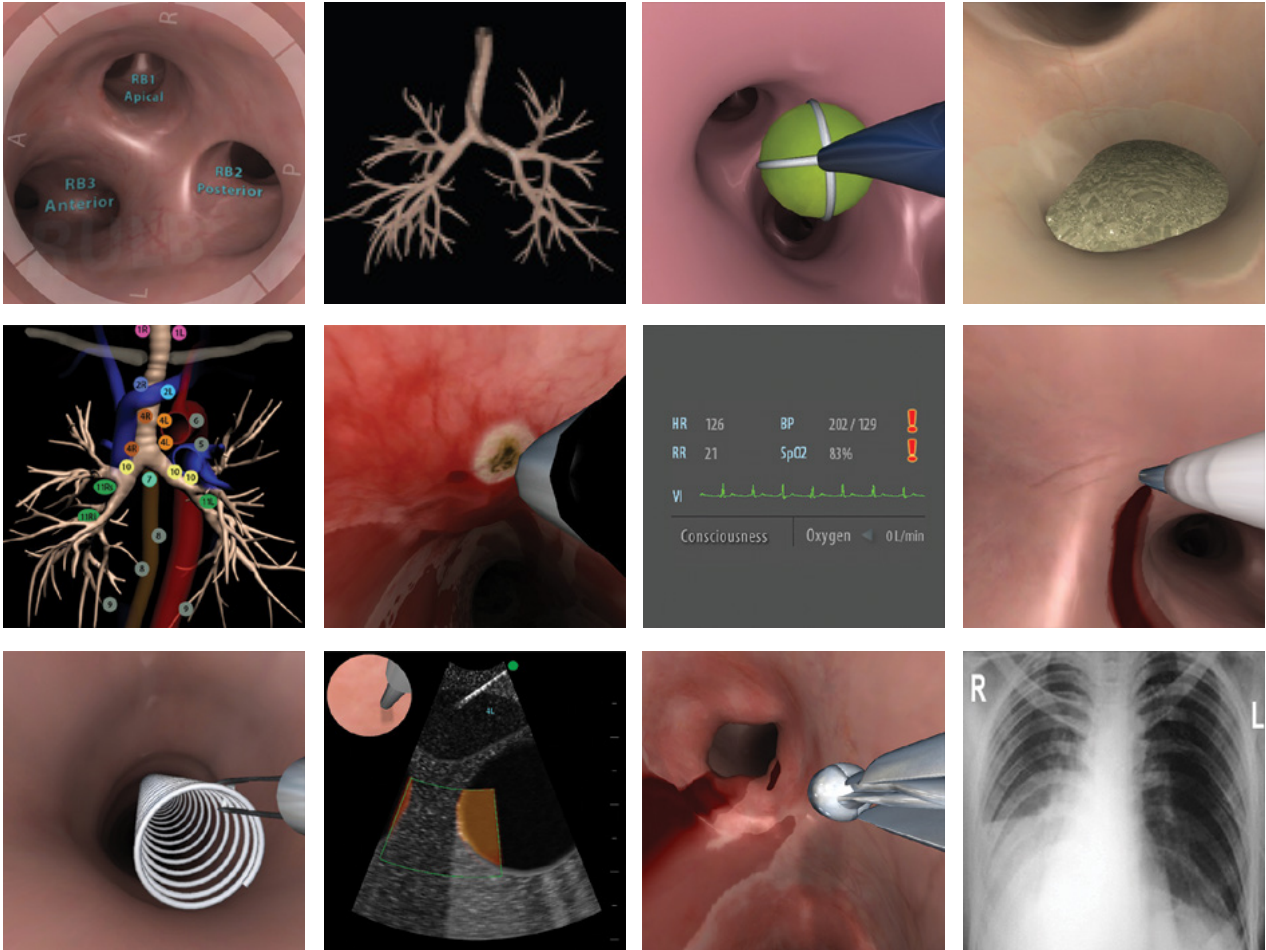


The CHEST standardized curriculum for essential bronchoscopic skills and diagnostic bronchoscopy:

The CHEST Standardized Curriculum for the BRONCH Mentor is a unique training module developed with The American College of Chest Physicians (CHEST). Cognitive knowledge and clinical decision making ability are seamlessly combined with hands-on practice, to be challenged and assessed as one continuous workflow.

A CHEST Certificate of Completion will be available upon meeting the qualification criteria.

The BRONCH Mentor offers the most realistic hands-on training for the widest range of bronchoscopic procedures.



MentorLearn Cloud

Ask how the MentorLearn Cloud simulator curricula management system can support your Symbionix simulator. MentorLearn's many capabilities include remote simulator administration, online learning, anywhere results monitoring, proficiency based hands-on training, as well as simulation video capture that is ideal for debriefing.



"Using the BRONCH Mentor and the BRONCH Express in our facility has enabled our trainees to rapidly acquire and adopt safe and efficient bronchoscopy habits. The use of the simulation software facilitates a deeper understanding of anatomic relationships in a low stakes environment that is very conducive to learning.

With comprehensive hands-on training using a graduated curriculum, deliberate practice and objective performance metrics, the path to proficiency is a carefully monitored one, and our patients have to carry less of the burden of the procedural learning curve."

George A. Eapen, MD, FACP, FCCP, Professor of Medicine
Section Chief, Interventional Pulmonology
Program Director, Interventional Pulmonology Fellowship Program
Department of Pulmonary Medicine
MD Anderson Cancer Center



"The GI-BRONCH Mentor is absolutely vital to our simulation curriculum. Practicing on the simulator gives the residents and medical students a lot of confidence going into the actual tests. We chose the GI-BRONCH Mentor as it has the widest array of interesting cases in addition to ample teaching modules to enhance skills training."

Dr. Michael Ujiki
Director, Simulation Lab
NorthShore University HealthSystem
Chicago, IL

台灣總代理



ADD:台北市中正區八德路一段 82 巷 9 弄 28 號

TEL:(02)2321-9465/FAX:(02)2396-0521

E-mail:youngtan@ms32.hinet.net

<http://www.youngtah.com.tw/>

